

C8051F020 UNI PROTOTYPE BOARD USER'S GUIDE

1. Summary

The UNI Prototype Board provides easy development and debugging of applications on the C8051F020 microcontroller through use of a JTAG debug header and direct through-hole access to each pin.

2. Features

- C8051F020 MCU
- JTAG debug header
- 0.1-inch center through-hole access to each pin
- Access to V_{DD} and DGND for an external voltage supplier

3. Hardware Setup

A USB Debug Adapter or EC2 Serial Adapter may be used to connect through the JTAG interface as shown in Figure 1. Power to the device must be supplied externally through pin V_{DD} on J6.

1. Connect the 10-pin ribbon cable from the debug adapter to the JTAG interface.
2. Connect the other end of the debug adapter to the appropriate port on the PC.
3. Connect an external power supply to the device by connecting the grounding cable to pin DGND on J6 and the power cable to pin V_{DD} .
4. Set the power supply voltage to +3.3 V.

Note: Ensure the power supply is off when connecting or disconnecting cables to the device in order to prevent accidental damage to device and/or debug adapter.

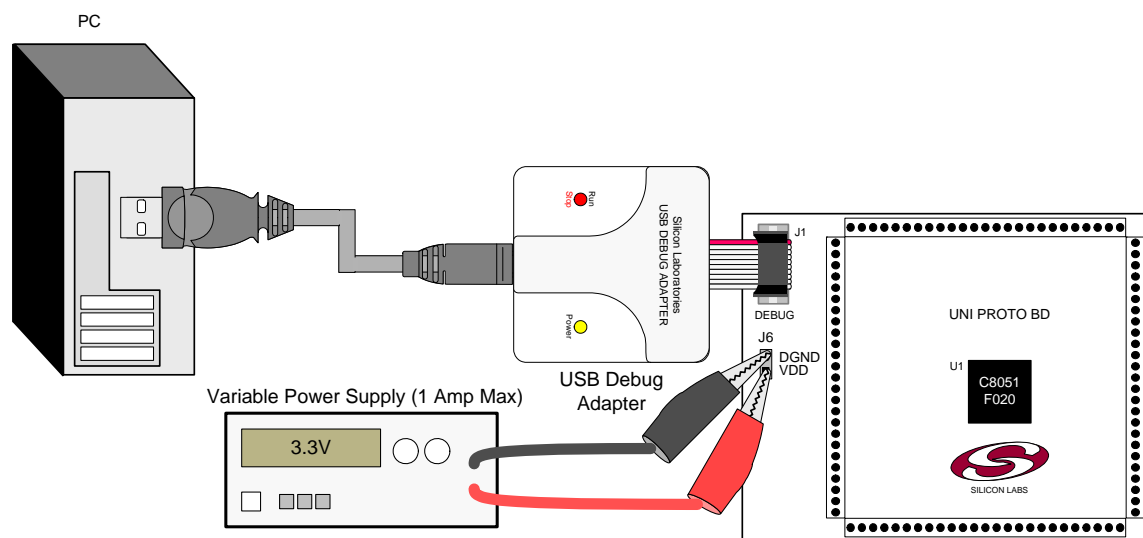
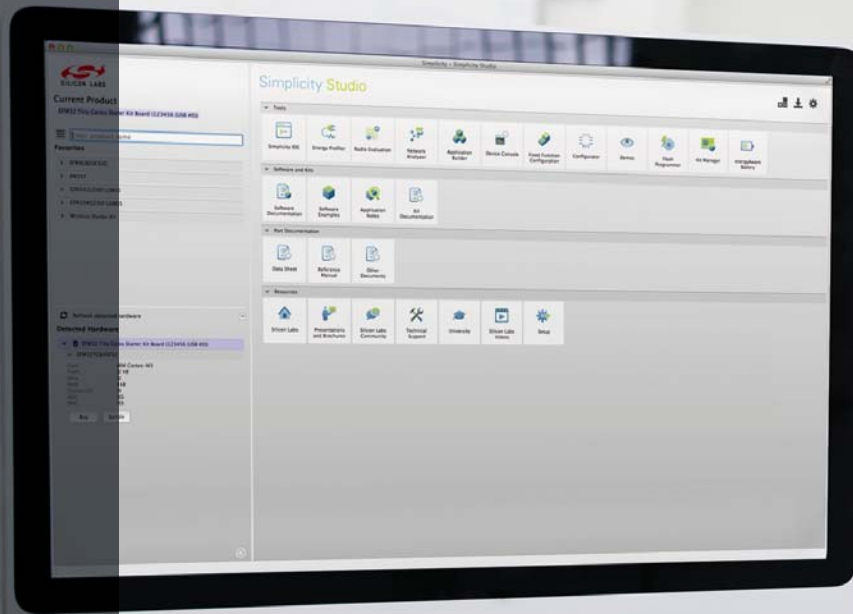


Figure 1. UNI Prototype Board Hardware Setup

Table 1. Adapters

USB Debug Adapter		EC2 Serial Adapter	
Pin #	Description	Pin #	Description
1,8	Not Connected	1	3.0 to 3.6 VDC Input
2,3,9	GND (Ground)	2,3,9	GND (Ground)
4	TCK (C2D)	4	TCK (C2D)
5	TMS	5	TMS
6	TDO	6	TDO
7	TDI (C2CK)	7	TDI (C2CK)
10	USB Power	8,10	Not Connected



Simplicity Studio

One-click access to MCU and wireless tools, documentation, software, source code libraries & more. Available for Windows, Mac and Linux!



IoT Portfolio
www.silabs.com/IoT



SW/HW
www.silabs.com/simplicity



Quality
www.silabs.com/quality



Support and Community
community.silabs.com

Disclaimer

Silicon Laboratories intends to provide customers with the latest, accurate, and in-depth documentation of all peripherals and modules available for system and software implementers using or intending to use the Silicon Laboratories products. Characterization data, available modules and peripherals, memory sizes and memory addresses refer to each specific device, and "Typical" parameters provided can and do vary in different applications. Application examples described herein are for illustrative purposes only. Silicon Laboratories reserves the right to make changes without further notice and limitation to product information, specifications, and descriptions herein, and does not give warranties as to the accuracy or completeness of the included information. Silicon Laboratories shall have no liability for the consequences of use of the information supplied herein. This document does not imply or express copyright licenses granted hereunder to design or fabricate any integrated circuits. The products must not be used within any Life Support System without the specific written consent of Silicon Laboratories. A "Life Support System" is any product or system intended to support or sustain life and/or health, which, if it fails, can be reasonably expected to result in significant personal injury or death. Silicon Laboratories products are generally not intended for military applications. Silicon Laboratories products shall under no circumstances be used in weapons of mass destruction including (but not limited to) nuclear, biological or chemical weapons, or missiles capable of delivering such weapons.

Trademark Information

Silicon Laboratories Inc., Silicon Laboratories, Silicon Labs, SiLabs and the Silicon Labs logo, CMEMS®, EFM, EFM32, EFR, Energy Micro, Energy Micro logo and combinations thereof, "the world's most energy friendly microcontrollers", Ember®, EZLink®, EZMac®, EZRadio®, EZRadioPRO®, DSPLL®, ISOmodem®, Precision32®, ProSLIC®, SiPHY®, USBXpress® and others are trademarks or registered trademarks of Silicon Laboratories Inc. ARM, CORTEX, Cortex-M3 and THUMB are trademarks or registered trademarks of ARM Holdings. Keil is a registered trademark of ARM Limited. All other products or brand names mentioned herein are trademarks of their respective holders.



SILICON LABS

Silicon Laboratories Inc.
 400 West Cesar Chavez
 Austin, TX 78701
 USA

<http://www.silabs.com>