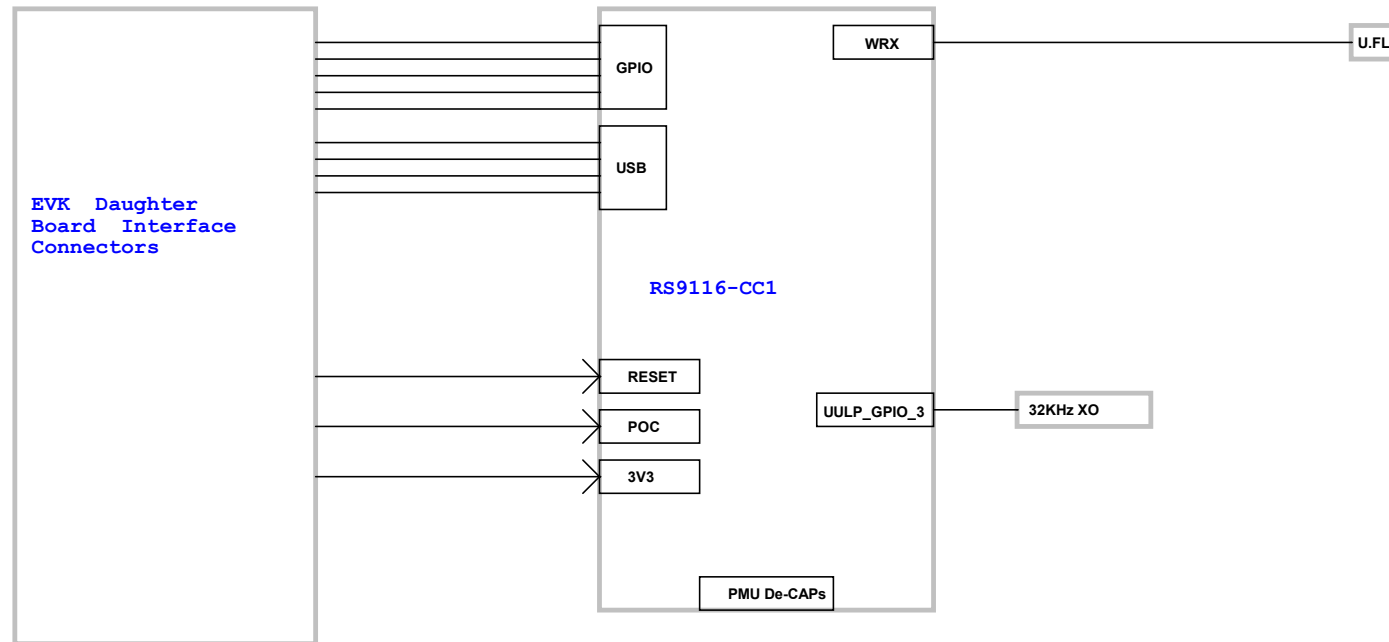

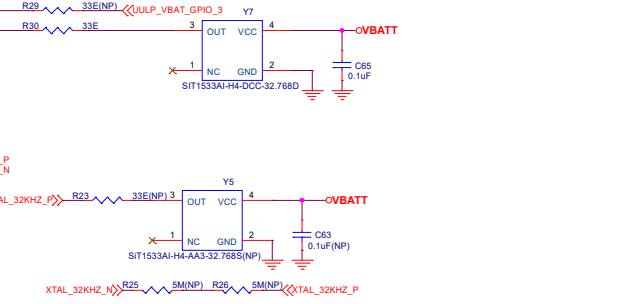
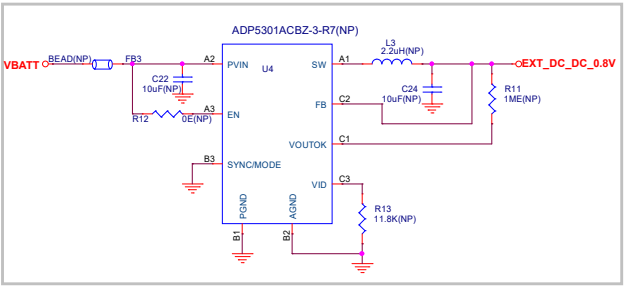
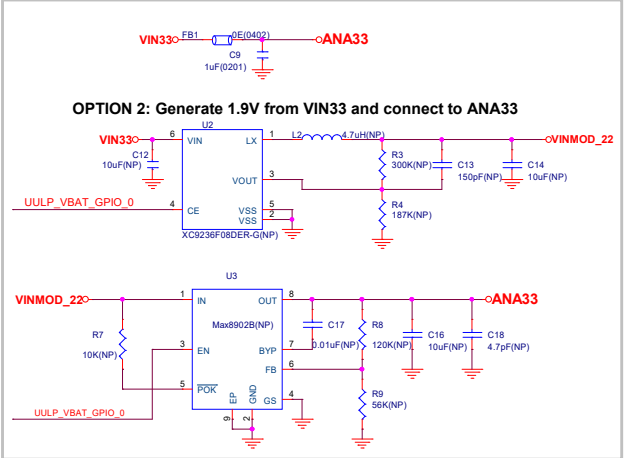
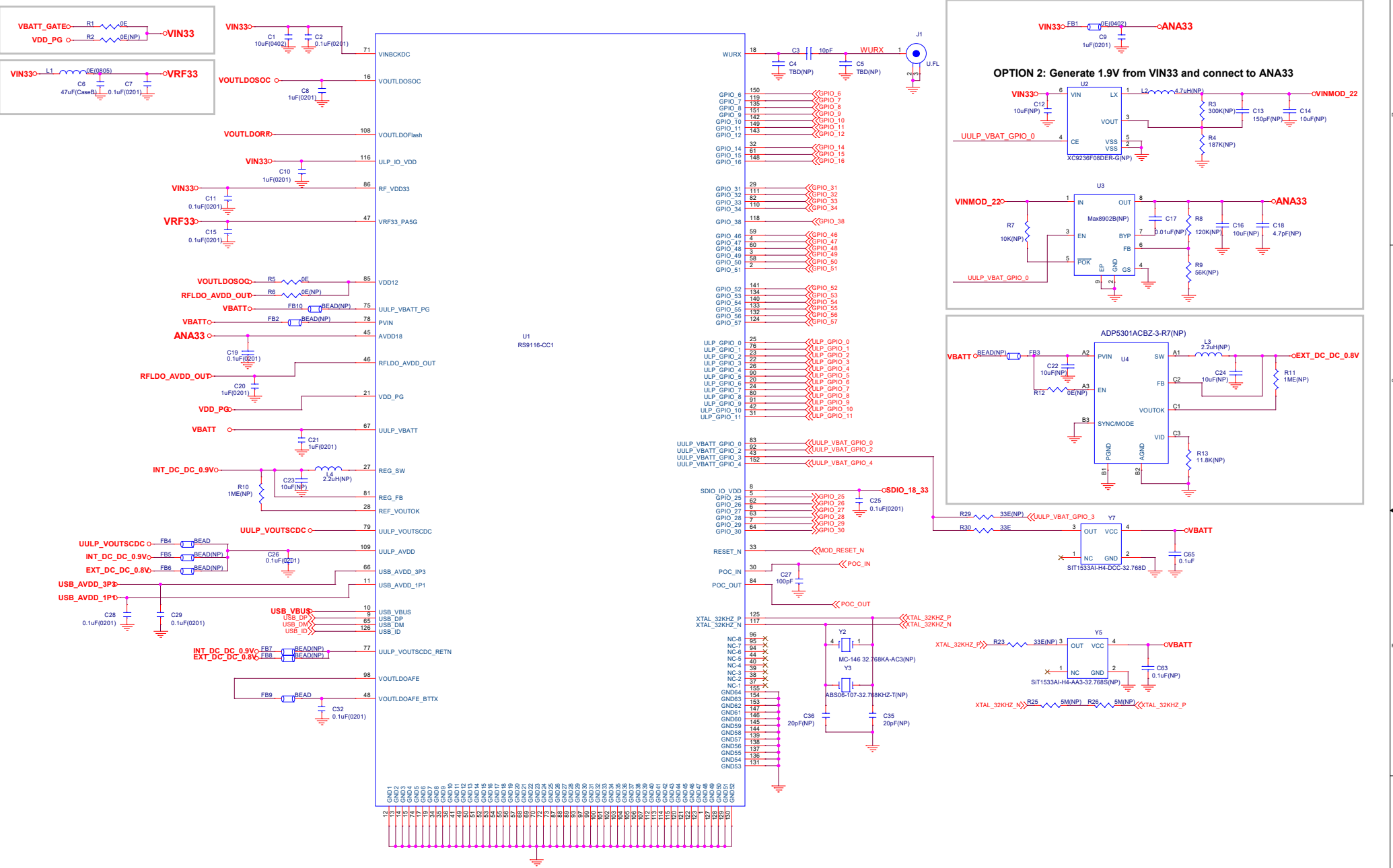


RS9116-CC1 EVK Daughter Board Block Diagram

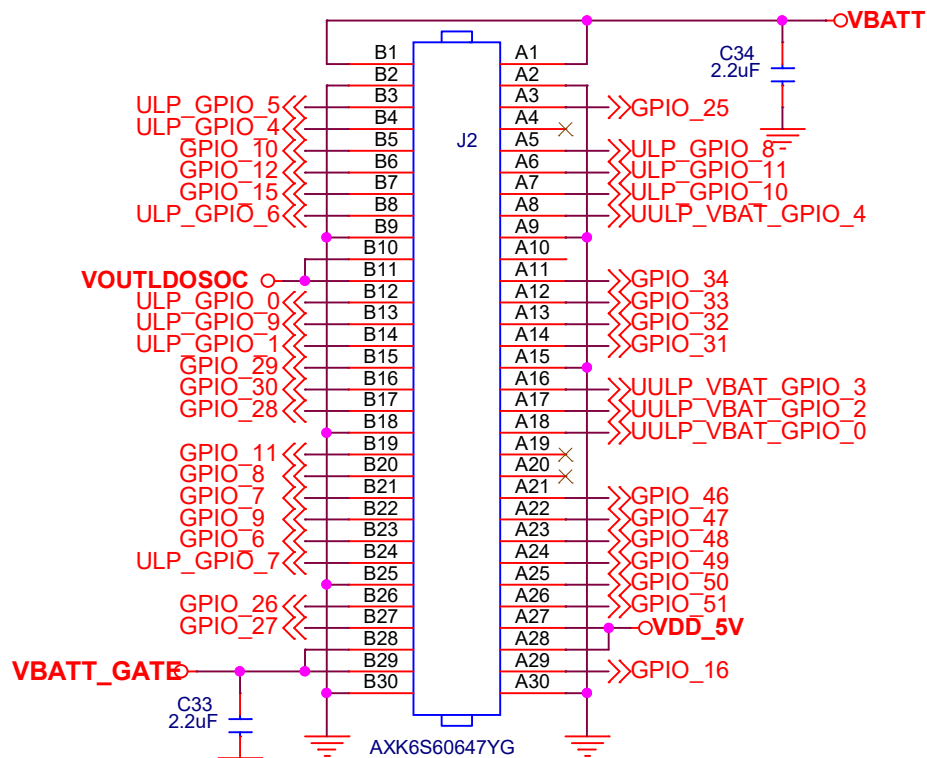


Silicon Labs Confidential

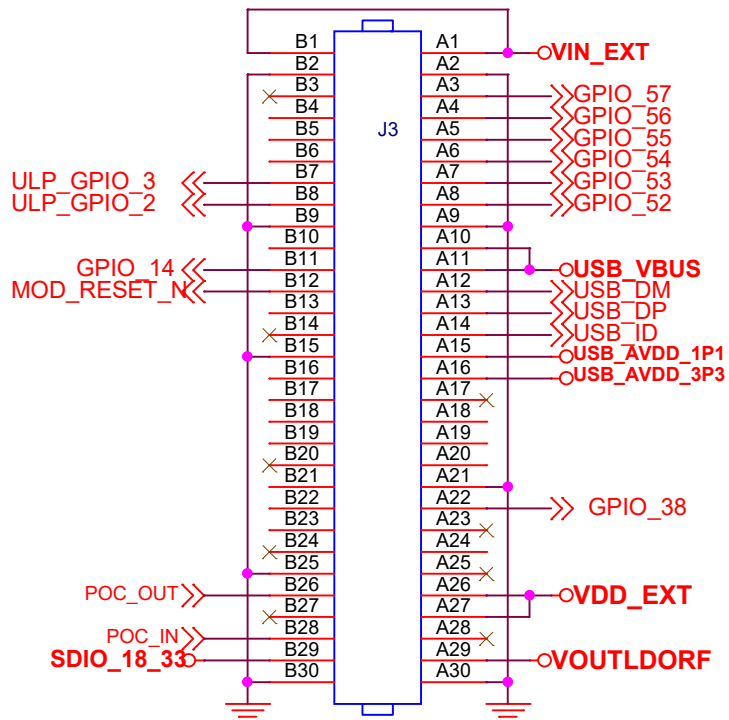
		400 W Cesar Chavez Austin, TX 78701	
Size	Title	RS9116X-DB-EVK1- Daughter Board	
Part Number	Document Number	Rev	
<Part Number>	Block Diagram	1.5	
Date:	Thursday, September 24, 2020	Sheet	1 of 4



Silicon Labs Confidential




Daughter Board Connector
Left Side



Daughter Board Connector
Right Side

Silicon Labs Confidential

		400 W Cesar Chavez Austin, TX 78701	
		Size	Title
		RS9116X-DB-EVK1- Daughter Board	
Part Number <Part Number>		Document Number Base Board Interface	
Date: Thursday, September 24, 2020		Rev 1.5	

Revision 1.0

1) Initial Version Schematics

Revision 1.1


1) Added 32KHz Oscillator/Xtal options on XTAL_32KHz_P&N pins

Revision 1.5

1) Added 32KHz Oscillator on UULP_GPIO_3

2) Title block changed from Redpine to Siliabs on 24th September 2020

Silicon Labs Confidential

		400 W Cesar Chavez Austin, TX 78701	
Size	Title		
	RS9116X-DB-EVK1- Daughter Board		
Part Number	Document Number		Rev
<Part Number>	Revision		1.5
Date:	Thursday, September 24, 2020	Sheet	4 of 4