



## EFR32 Mighty Gecko Radio Board

2.4 GHz / 915 MHz 19 dBm, VMCU to PAVDD

Board Function	Page
Title Page	1
RF, Antenna & Power	2
EFR32 Signal Assignments	3
WSTK Connectors & Board ID	4

Revision History	
Rev.	Description
A00	Initial version.
A01	Fixing EFR part number.
A02	Updated EFR32 chip revision and 32 kHz crystal part number.
A03	Updated EFR32 to Rev. C. Fixed 32 kHz crystal P/N. Updated PCB rev.

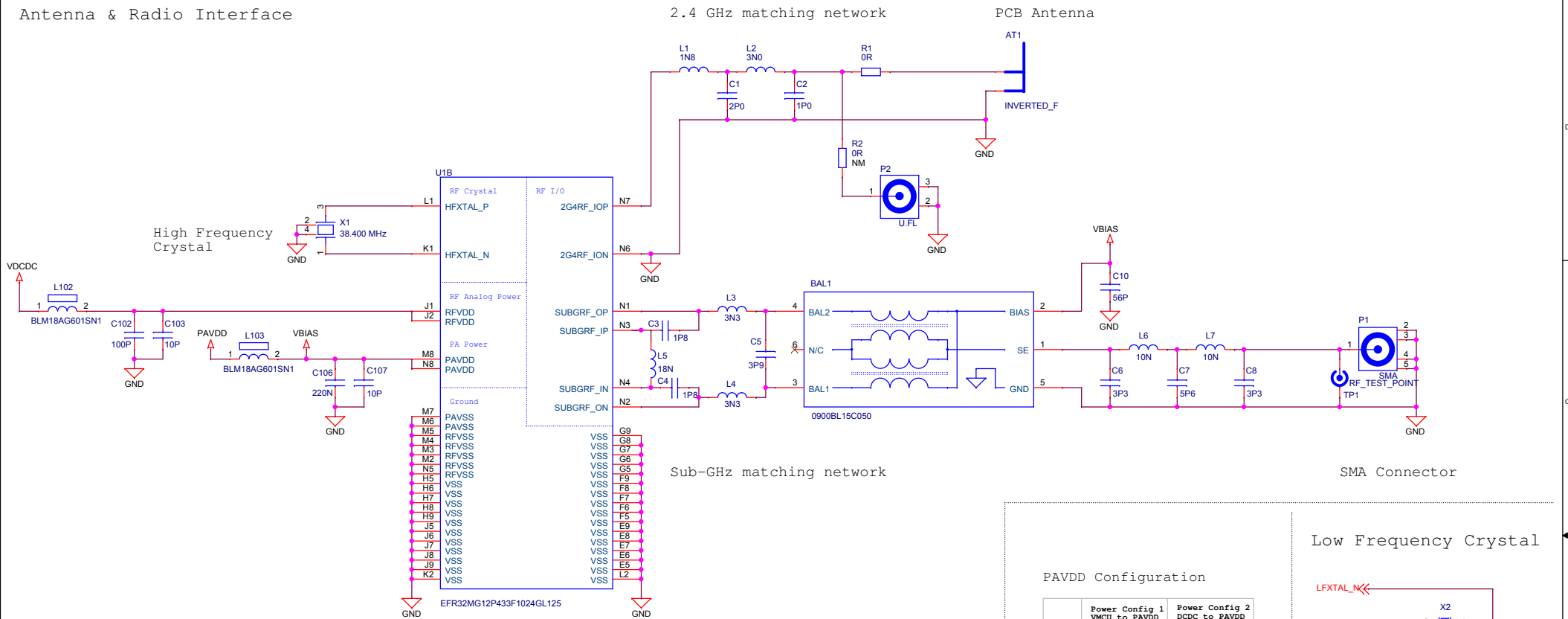
LEGAL NOTICE:  
 SILICON LABORATORIES INC. ("SILICON LABS") AND/OR ITS LICENSORS DO NOT WARRANT THE ACCURACY OR COMPLETENESS OF THIS SCHEMATIC OR ANY INFORMATION CONTAINED WITHIN THIS SCHEMATIC. IT IS PROVIDED "AS-IS" FOR REFERENCE ONLY. SILICON LABS DOES NOT WARRANT THAT THIS DESIGN WILL MEET THE SPECIFICATIONS, BE SUITABLE FOR YOUR APPLICATION OR FIT FOR ANY PARTICULAR PURPOSE, OR WILL OPERATE IN YOUR IMPLEMENTATION. SILICON LABS AND ITS LICENSORS DO NOT WARRANT THAT THE DESIGN IMPLIED IN THIS SCHEMATIC IS PRODUCTION-WORTHY. YOU SHOULD COMPLETELY VALIDATE AND TEST YOUR DESIGN IMPLEMENTATION TO CONFIRM SYSTEM FUNCTIONALITY FOR YOUR APPLICATION.



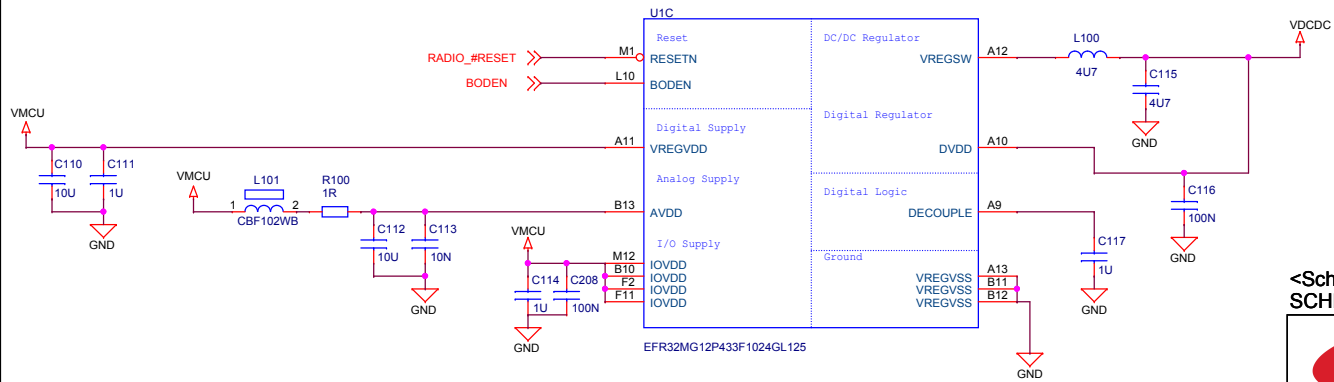
<Schematic Path>  
 SCHEMATIC1

		Schematic Title	
		<b>EFR32MG12 Dual Band 2400/915 MHz Radio</b>	
Designed: TAB		Approved: <OrgAddr2>	
Page Title		Revision	
<b>Title Page</b>		<b>A03</b>	
Size: A3		Document number	
BOM Doc No: <Cage Code>		<b>BRD4164A</b>	
Design Created Date: Monday, April 02, 2012		Sheet Created Date: Monday, April 02, 2012	Sheet Modified Date: Friday, October 13, 2017
		Sheet 1 of 4	

Antenna & Radio Interface

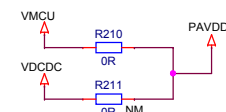


Power & Decoupling

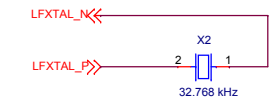


PAVDD Configuration

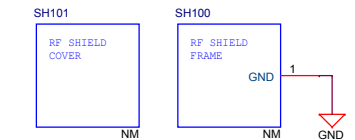
	Power Config 1 VMCU to PAVDD	Power Config 2 DCDC to PAVDD
R210	Mount	Not mount
R211	Not mount	Mount



Low Frequency Crystal



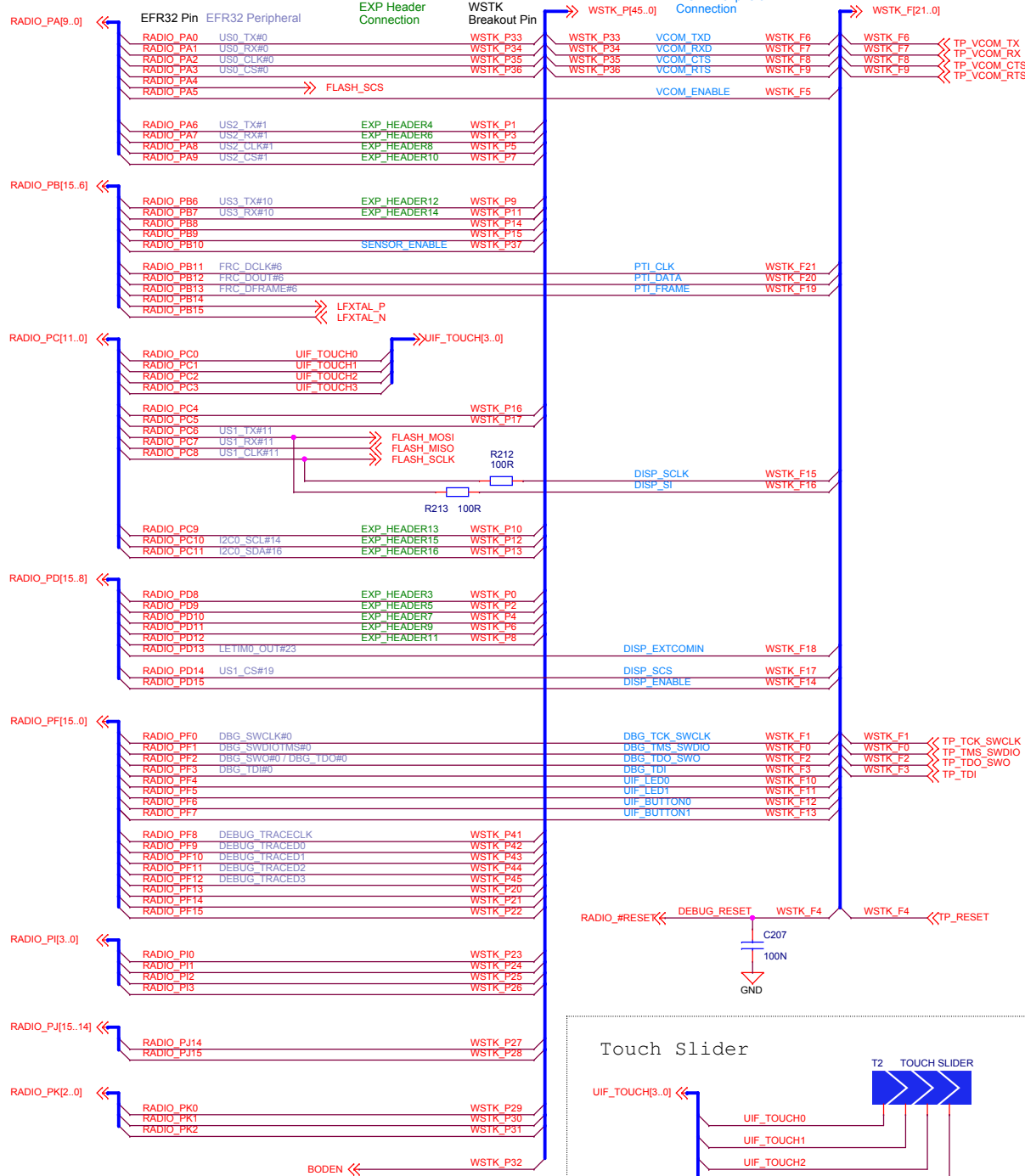
RF Shielding



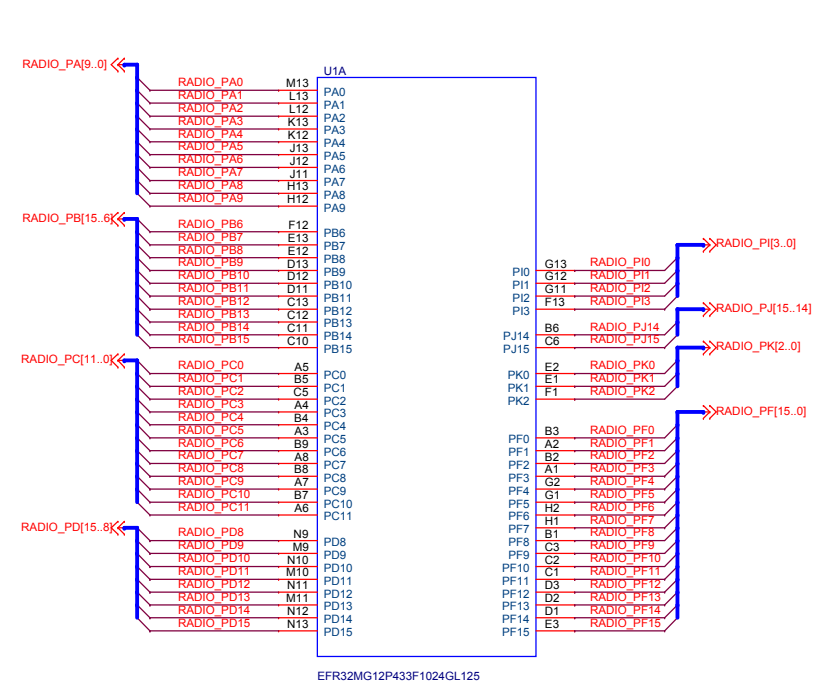
<Schematic Path>  
SCHEMATIC1

<p><b>SILICON LABS</b></p>		Schematic Title	
		<b>EFR32MG12 Dual Band 2400/915 MHz Radio Bo</b>	
Designed: TAB		Page Title	
Approved: <OrgAddr2>		<b>RF, Antenna &amp; Power</b>	
Size: A3		Document number	
BOM Doc No: <Cage Code>		<b>BRD4164A</b>	
Design Created Date: Monday, April 02, 2012		Revision	
Sheet Created Date: Monday, April 02, 2012		<b>A03</b>	
Sheet Modified Date: Friday, October 13, 2017		Sheet 2 of 4	

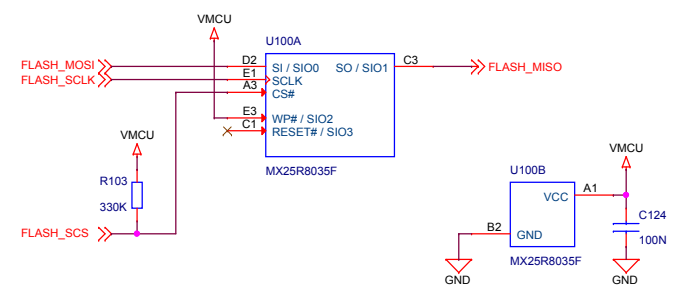
# EFR32 Pin Mapping



# EFR32 I/O Port Pins



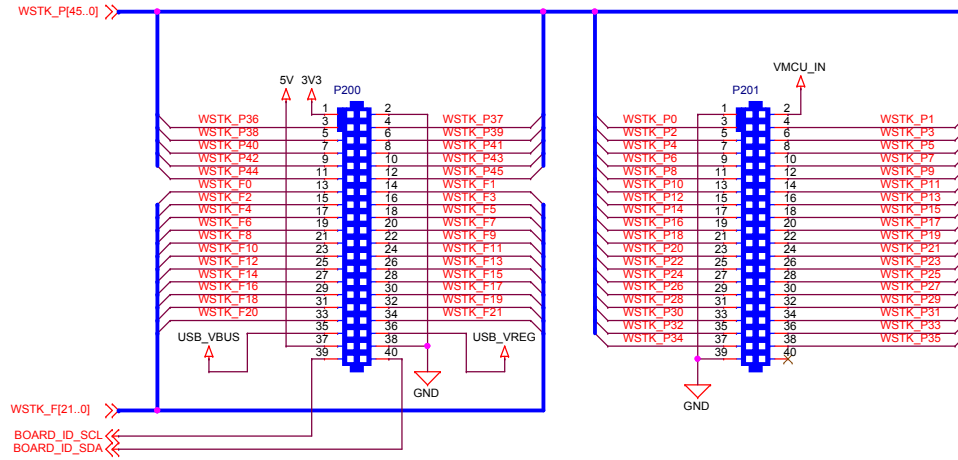
# Serial Flash



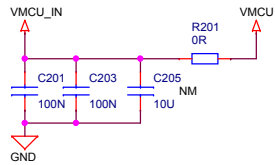
# <Schematic Path> SCHEMATIC1

		Schematic Title	
		<b>EFR32MG12 Dual Band 2400/915 MHz Radio Bo</b>	
Designed: TAB Size: A3 Design Created Date: Monday, April 02, 2012		Page Title	
		<b>EFR32 I/O Port Connections</b>	
Approved: <OrgAddr2> BOM Doc No: <Cage Code>		Document number	Revision
Design Created Date: Monday, April 02, 2012		BRD4164A	A03
Sheet Created Date: Wednesday, April 11, 2012		Sheet Modified Date: Friday, October 13, 2017	Sheet 3 of 4

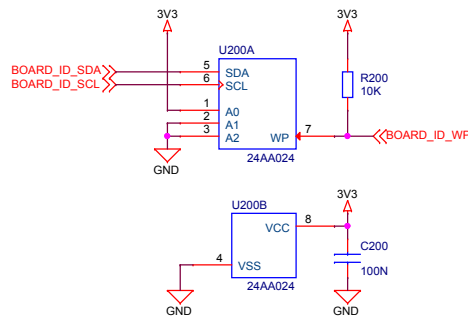
# WSTK Connectors



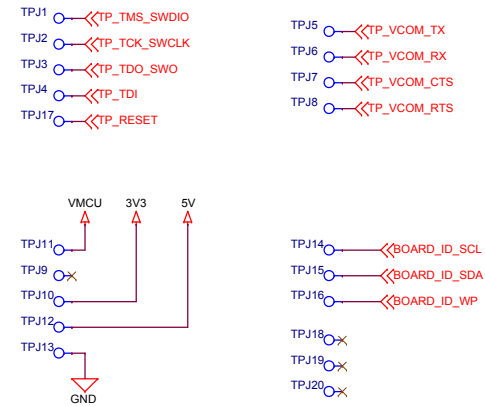
## WSTK Power Decoupling



## Board Identification



## Test Points



<Schematic Path>  
SCHEMATIC1

		Schematic Title	
		<b>EFR32MG12 Dual Band 2400/915 MHz Radio Bo</b>	
Designed: TAB Size: A3 Design Created Date: Monday, April 02, 2012		Page Title	
		<b>WSTK Connectors &amp; Board ID</b>	
BOM Doc No: <Cage Code>		Document number	Revision
		<b>BRD4164A</b>	<b>A03</b>
Sheet Created Date: Monday, April 02, 2012		Sheet Created Date: Tuesday, April 03, 2012	Sheet Modified Date: Friday, October 13, 2017
		4	of 4