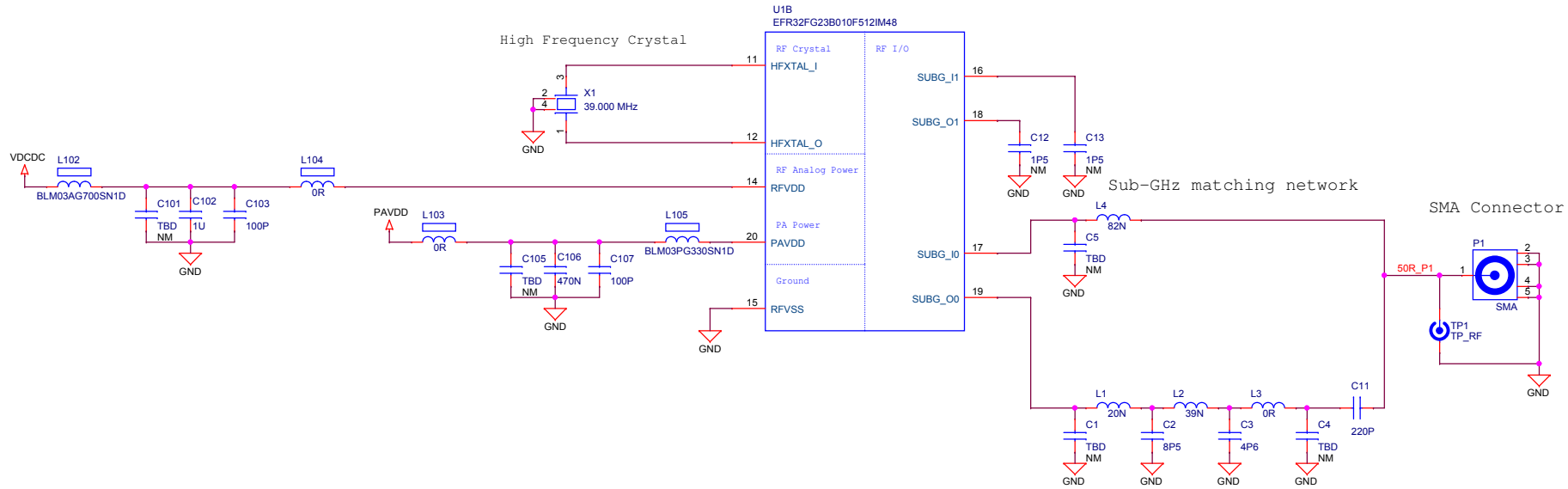
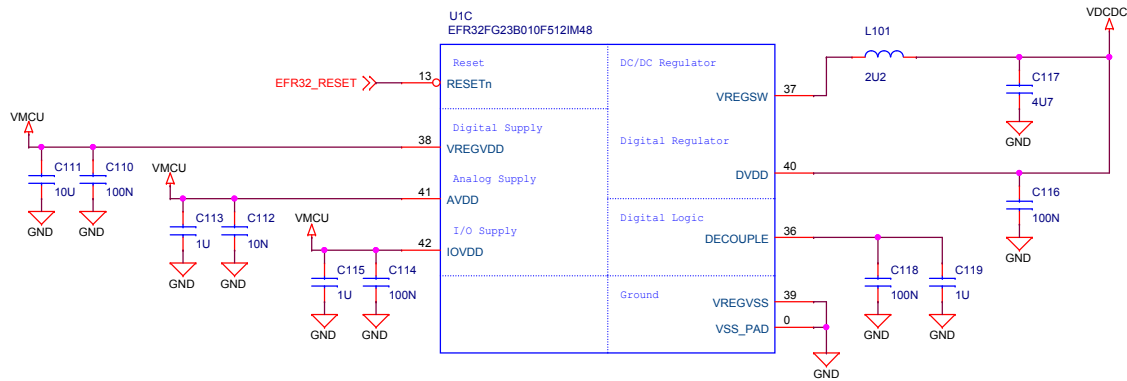


Radio Interface

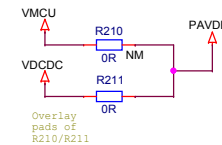


Power & Decoupling

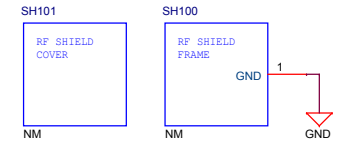


PAVDD Configuration

	Power Config 1 VMCU to PAVDD	Power Config 2 DCDC to PAVDD
R210	Mount	Not mount
R211	Not mount	Mount

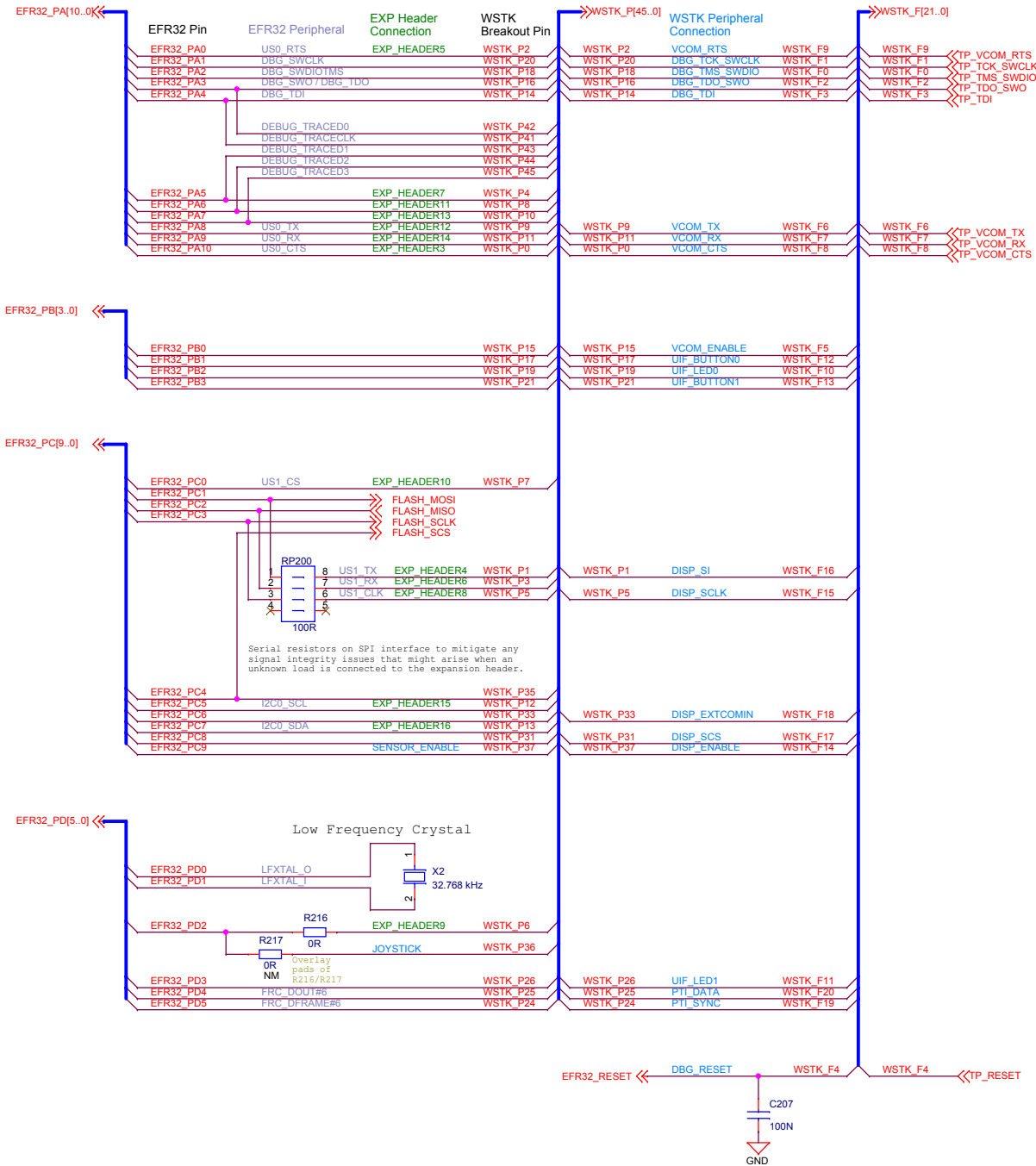


RF Shielding

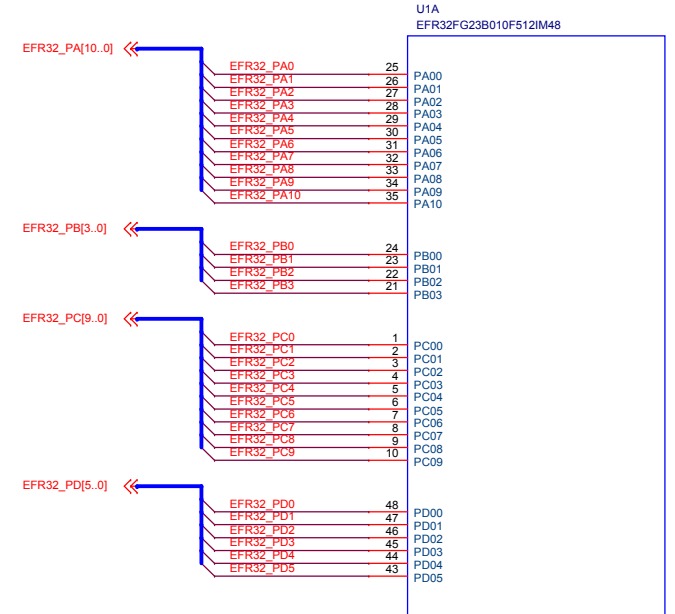


		Board Name	
		EFR32FG23B 434 MHz 10 dBm Radio Board	
Designed TAB		Approved	
		RGU	
Size	Sheet Modified Date	Board Number	
A3	Friday, April 22, 2022	BRD4265B	
COPYRIGHT SILICON LABORATORIES INC. 2020 CONFIDENTIAL – SUBJECT TO TERMS OF USE			Revision
			A01
			Sheet 2 of 4

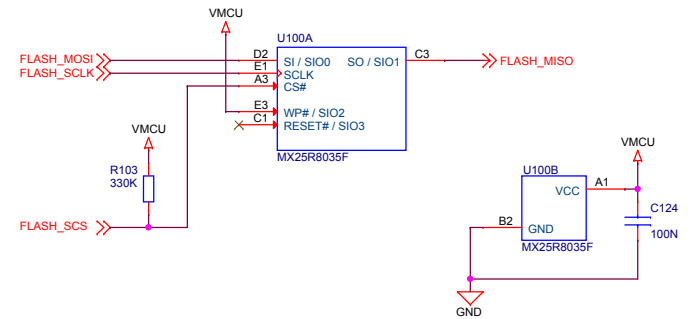
Pin Mapping



I/O Port Pins

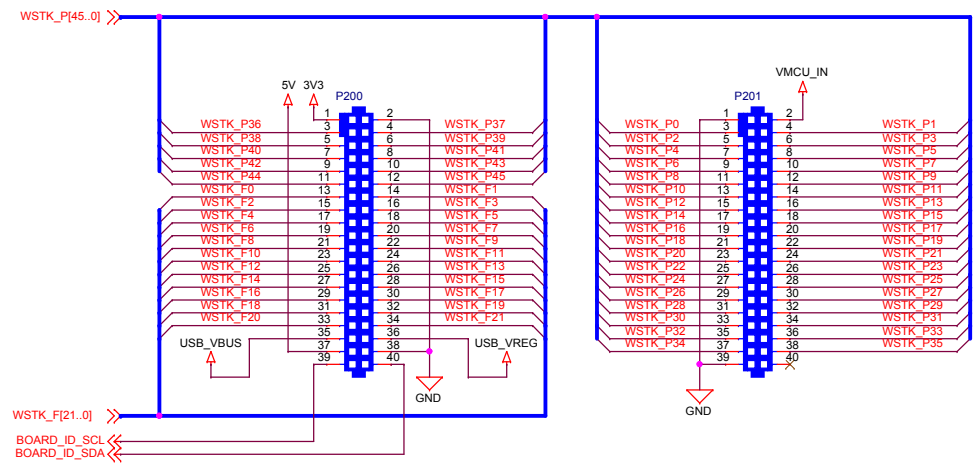


Serial Flash

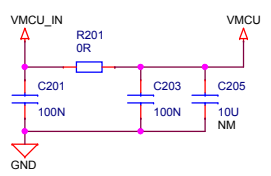


		Board Name	
		EFR32FG23B 434 MHz 10 dBm Radio Board	
SILICON LABS		Page Title	
		EFR32 Signal Assignments	
Designed TAB	Approved RGU	Board Number	Revision
Size A3	Sheet Modified Date Friday, April 22, 2022	BRD4265B	A01
COPYRIGHT SILICON LABORATORIES INC. 2020 CONFIDENTIAL - SUBJECT TO TERMS OF USE			Sheet 3 of 4

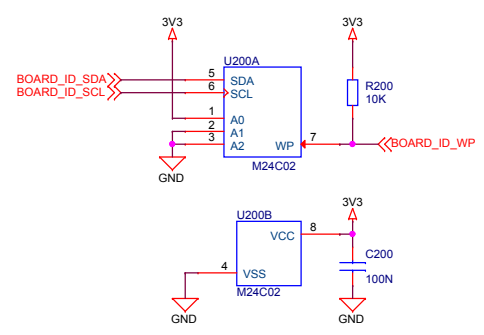
WSTK Connectors



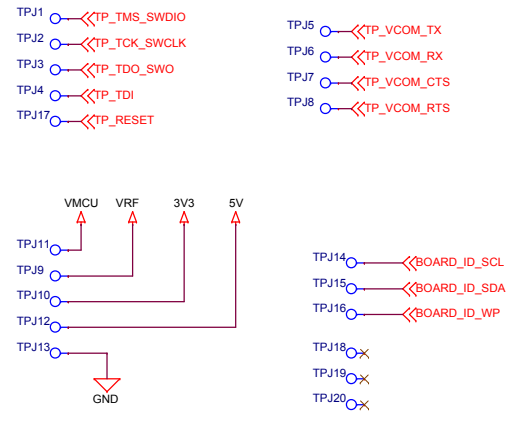
WSTK Power Decoupling



Board Identification



Test Points



		Board Name	
		EFR32FG23B 434 MHz 10 dBm Radio Board	
Designed TAB		Page Title	
		WSTK Connectors & Board ID	
Size A3		Board Number	Revision
Sheet Modified Date Friday, April 22, 2022	BRD4265B		A01
COPYRIGHT SILICON LABORATORIES INC. 2020 CONFIDENTIAL – SUBJECT TO TERMS OF USE			Sheet 4 of 4